



Tender Offer for the shares of RYOMO SYSTEMS

Thursday, May 14, 2026

Summary of the Tender Offer

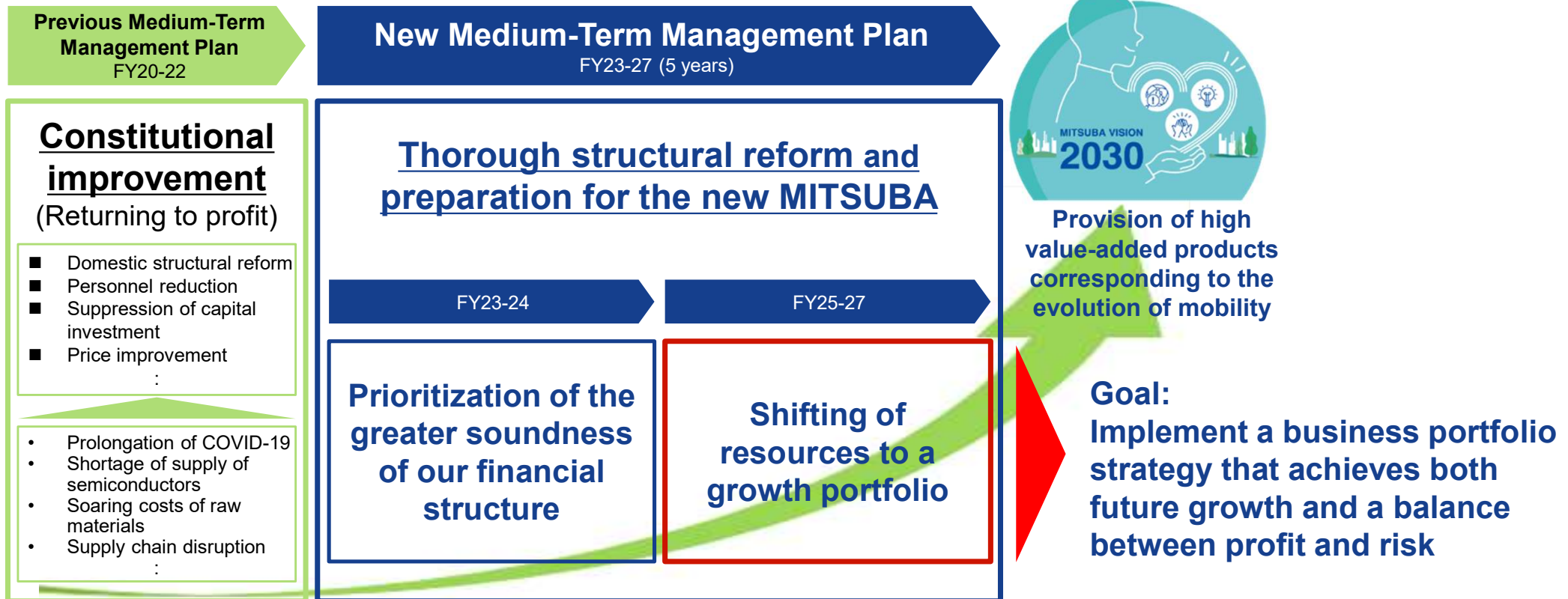
- **The Company and Chubu Electric Power will conduct a tender offer for the shares of RYOMO SYSTEMS.**
- **The ratio of voting rights in RYOMO SYSTEMS after it is taken private: **The Company: 80%; Chubu Electric Power: 20%****

Item	Summary
Target company	RYOMO SYSTEMS CO., LTD.
Offerors	The Company and Chubu Electric Power Company, Incorporated
Tender offer period	From May 15, 2026 (Friday) to July 8, 2026 (Wednesday) (39 business days)
Tender offer price	5,200 yen per share
Number of shares to be purchased	1,703,447 shares (Minimum number of shares to be purchased: 537,260 shares; Maximum number of shares to be purchased: None)
Total purchase amount for tender offer	Approximately 8.9 billion yen (the Company to purchase approx. 5.2 bn. yen)

- The Tender Offer will be conducted using the Offerors' own funds.
- If the Offerors acquire the minimum number of shares to be purchased but are unable to acquire all of the shares, they will implement squeeze-out procedures to make the ratio of voting rights held by the Company and Chubu Electric Power 80% and 20%, respectively.
- The total purchase amount will be the amount equal to the number of shares to be purchased (1,703,447 shares) multiplied by the tender offer price of 5,200 yen.

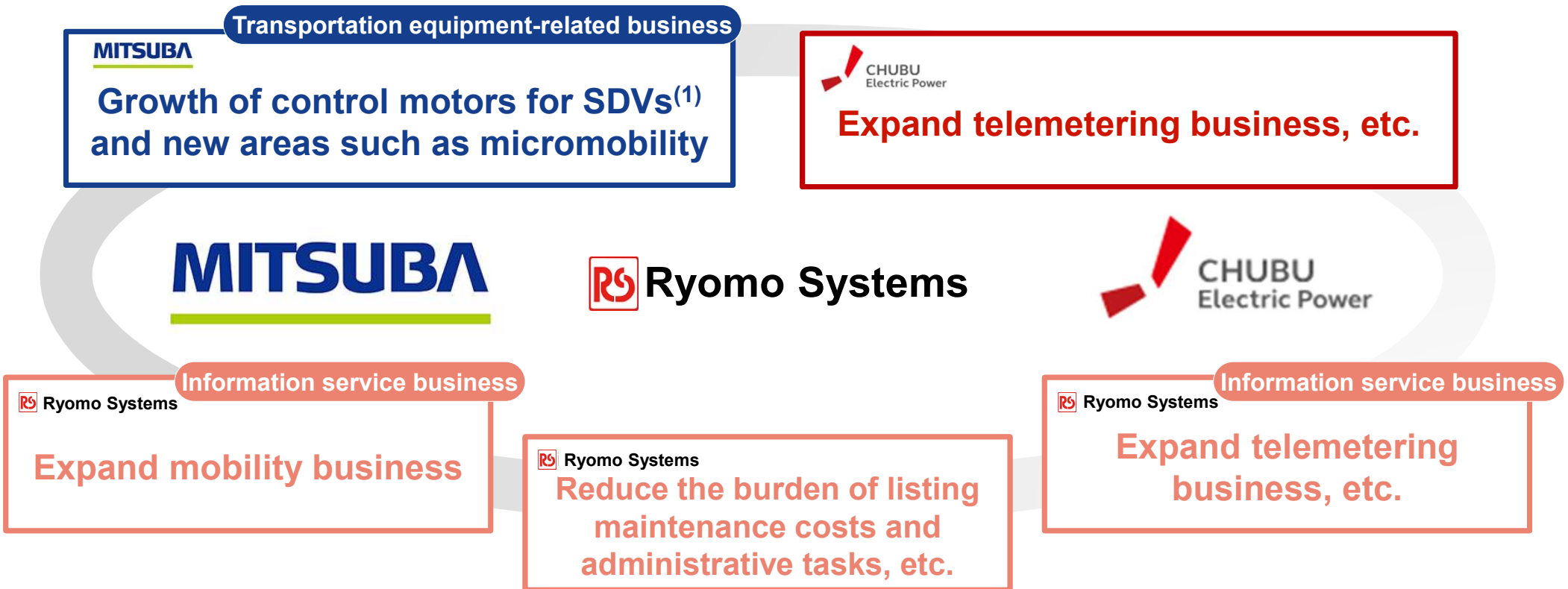
Background to Transaction

- In order to achieve MITSUBA Vision 2030, we established a medium-term management plan ending in FY2027, and we are shifting resources to a growth portfolio to achieve both growth and a balance between risk and profit.



Purpose of Transaction

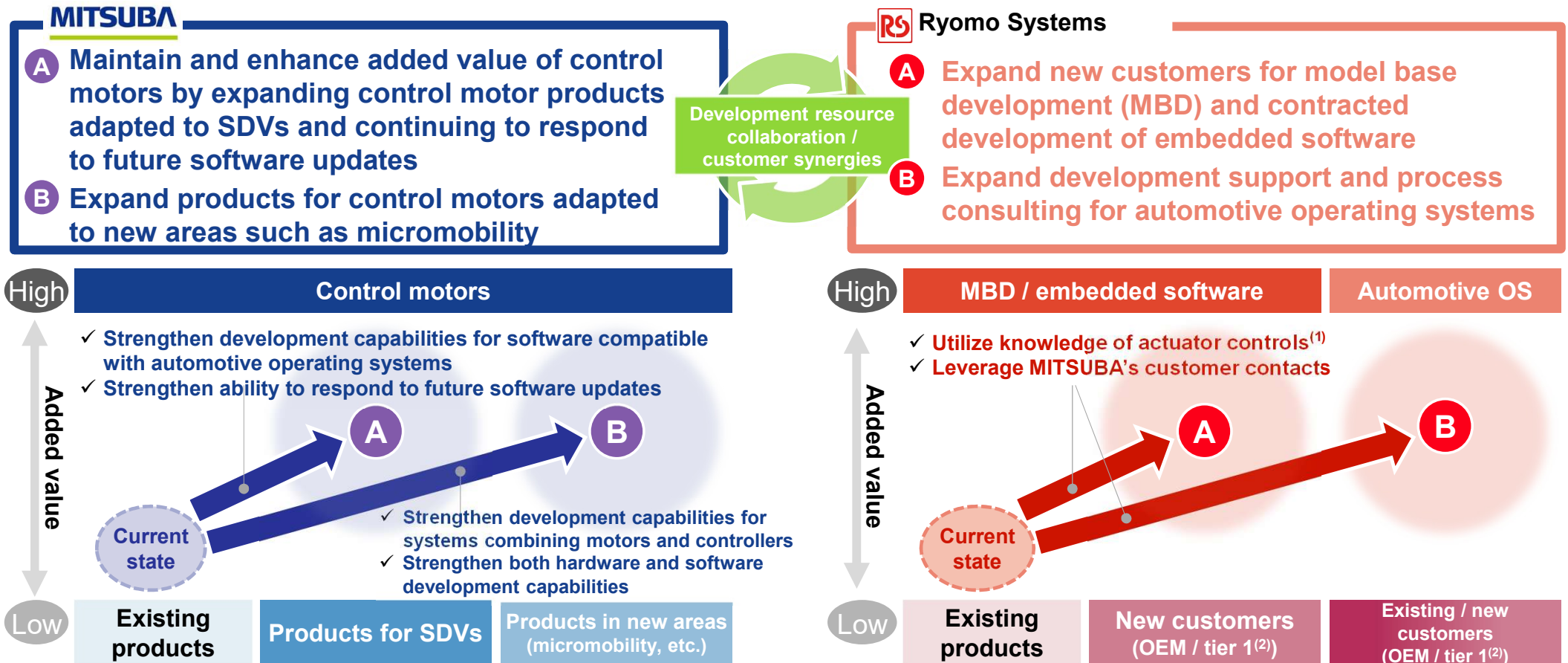
- Through this transaction, the MITSUBA Group aims to achieve stable growth for the transportation equipment-related business and expand the information service business, thereby optimizing the balance of risks in its business portfolio and enhancing corporate value over the medium to long term.



Note 1: SDVs refers to Software Defined Vehicles.

Synergies Anticipated Between MITSUBA and Ryomo Systems

- By strengthening collaboration with Ryomo Systems, we aim to expand control motors (high added-value motors with embedded software) that are compatible with the rapidly growing trend toward SDVs and electrification.

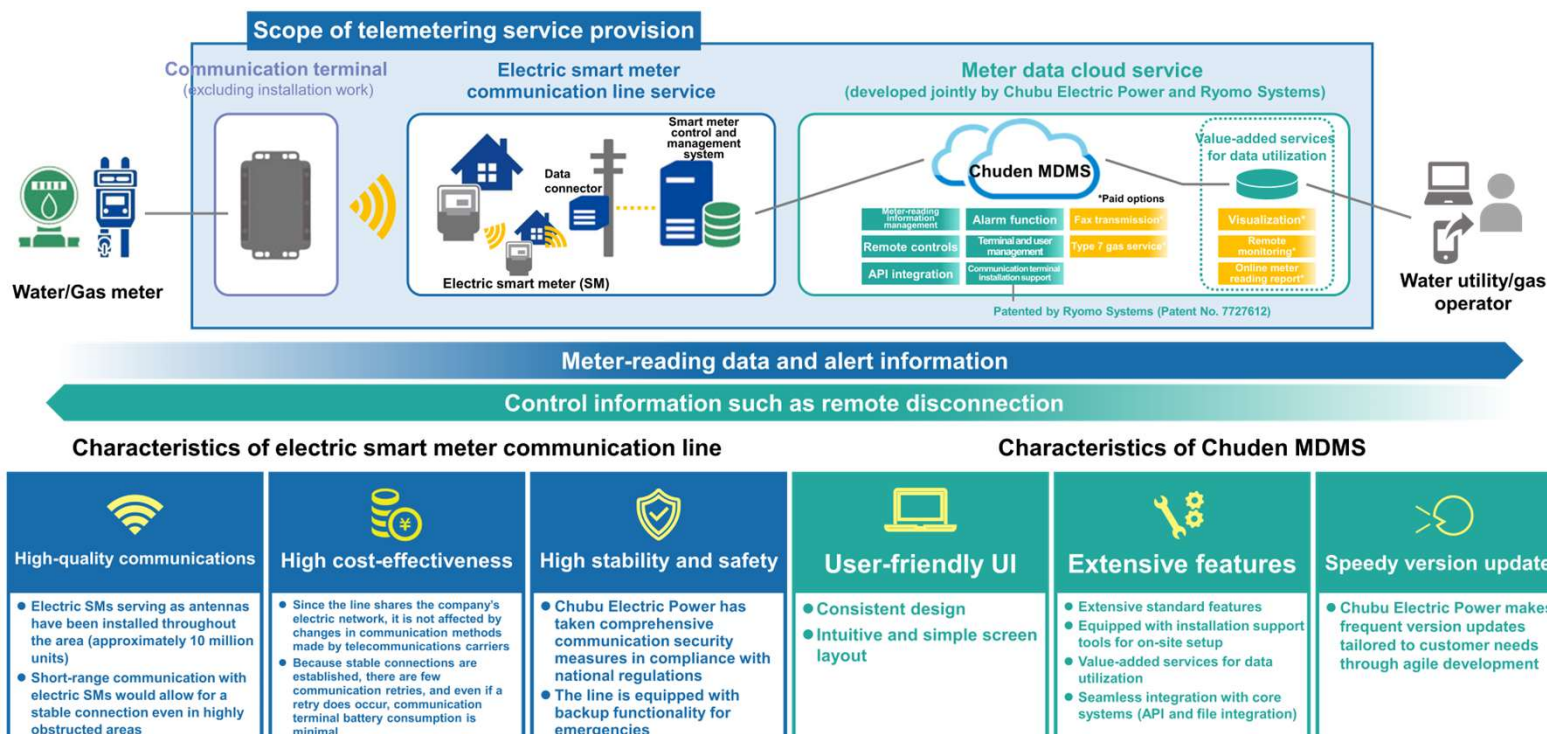


Note 1: Actuators are components that perform actual, mechanical motions using the power of the motor.

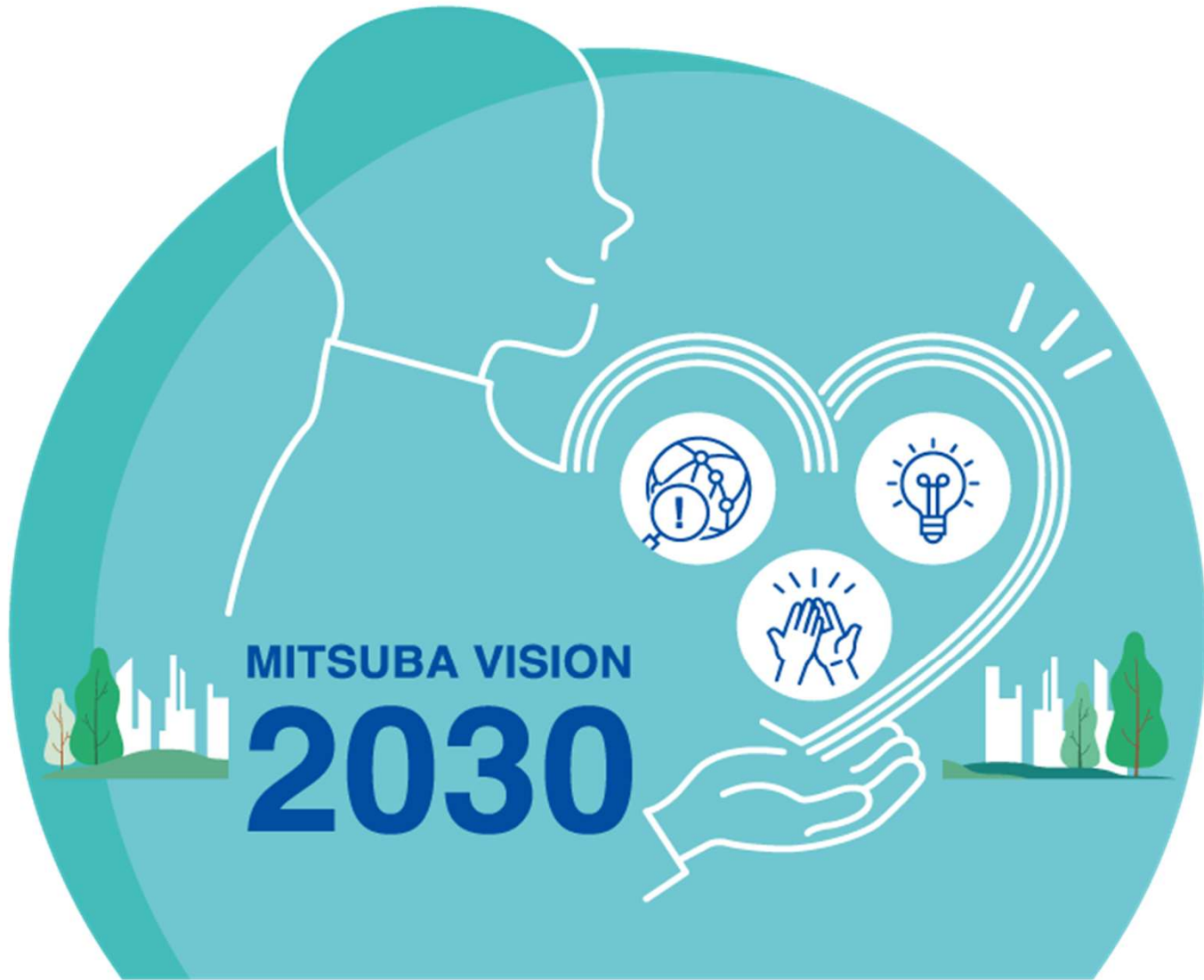
Note 2: Tier 1 suppliers are companies that supply parts and systems directly to OEMs.

(Reference) Outline of Telemetry Business

- From 2021, Chubu Electric Power began providing telemetry services (joint meter readings) using an electronic smart meter communication system created in order to conduct automatic electricity meter readings, and as of now, more than 400,000 people have subscribed.
- Key features of this service include reliable connectivity and cost-effectiveness, as well as the rich functionality and user-friendliness of the data-handling “Meter Reading, Monitoring, and Control Cloud Service (Chuden MDMS)” developed in collaboration with Ryomo Systems.
- In addition, Chubu Electric Power is focusing on the implementation of data utilization services and regional joint BPO for water utilities to enhance convenience and streamline its business.



Source: The Company prepared this page based on the materials prepared by Chubu Electric Power.



~ End of Presentation ~